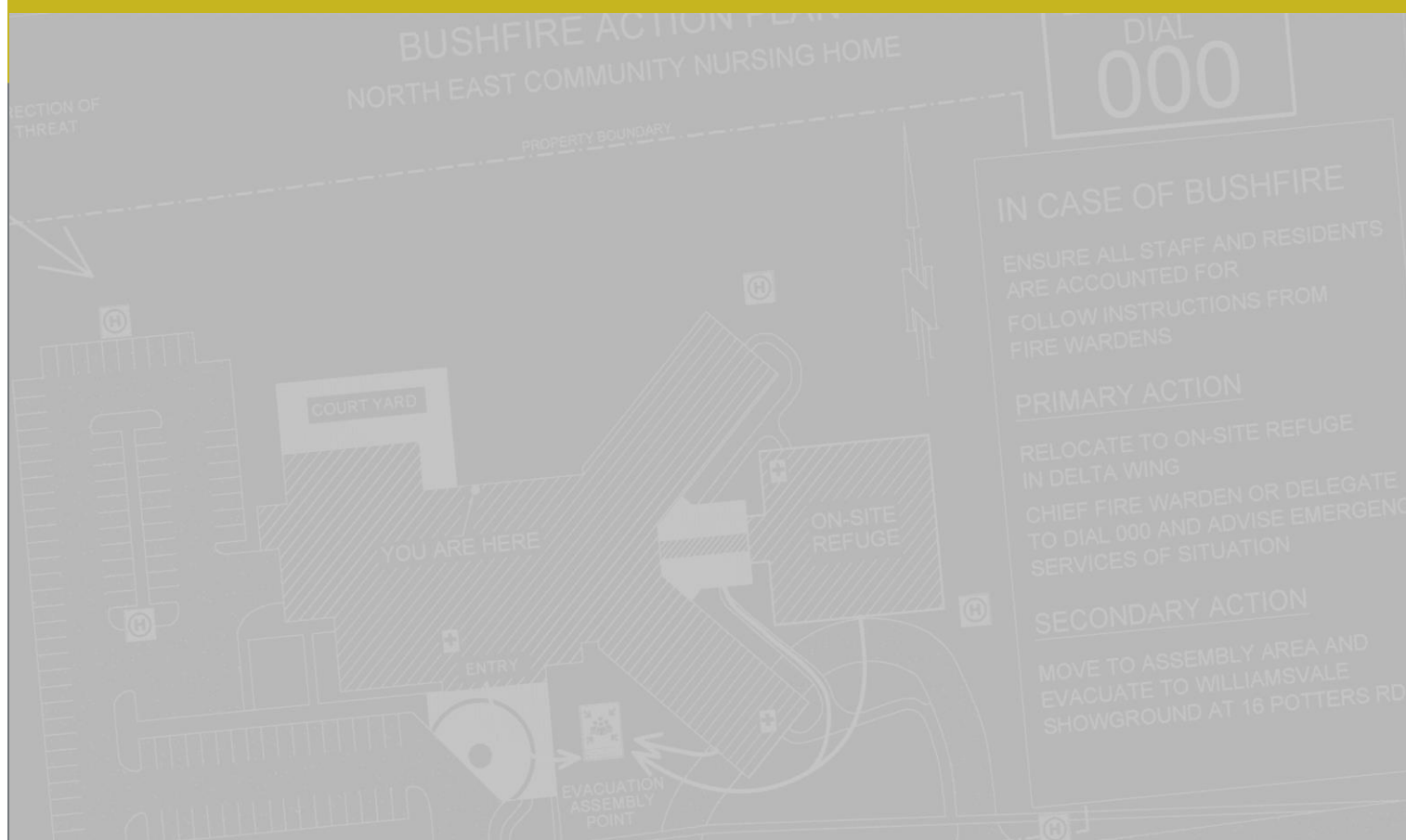


# SAMPLE BUSHFIRE ACTION PLANS



**fire.tas.gov.au**

**Bushfire Planning & Policy** GPO Box 1526 Hobart Tasmania 7001

Phone (03) 6230 8600 | Fax (03) 6231 6647 | [planning@fire.tas.gov.au](mailto:planning@fire.tas.gov.au)



### For further information

Tasmania Fire Service  
Bushfire Planning & Policy  
GPO Box 1526  
HOBART TAS 7001  
PH: (03) 6230 8600 or 1800 000 699  
Email: [planning@fire.tas.gov.au](mailto:planning@fire.tas.gov.au)  
Web: [www.fire.tas.gov.au](http://www.fire.tas.gov.au)

Please refer to *Bushfire Emergency Planning Guideline* for further information on application and requirements.

A template plan is available from Tasmania Fire Service.

### Disclaimer

While the State Fire Commission has made every effort to ensure the accuracy and reliability of the information contained in this booklet, the State Fire Commission does not accept any responsibility for the accuracy, completeness, or relevance to the reader's purpose, of the information contained in this document and those reading it for whatever purpose are advised to verify its accuracy and to obtain appropriate professional advice.

The State Fire Commission, its officers, employees and agents do not accept any liability, however arising, including liability for negligence, for any loss or damage resulting from the use of, or reliance upon, the information contained in this document.

# BUSHFIRE ACTION PLAN

## PENTHURST HOLIDAY VILLA APARTMENTS

YOU ARE HERE

EMERGENCY  
DIAL  
**000**

### IN CASE OF BUSHFIRE

ENSURE ALL VISITORS AND STAFF ARE ACCOUNTED FOR  
FOLLOW ALL INSTRUCTIONS FROM FIRE WARDENS  
CLOSE DOORS AND WINDOWS

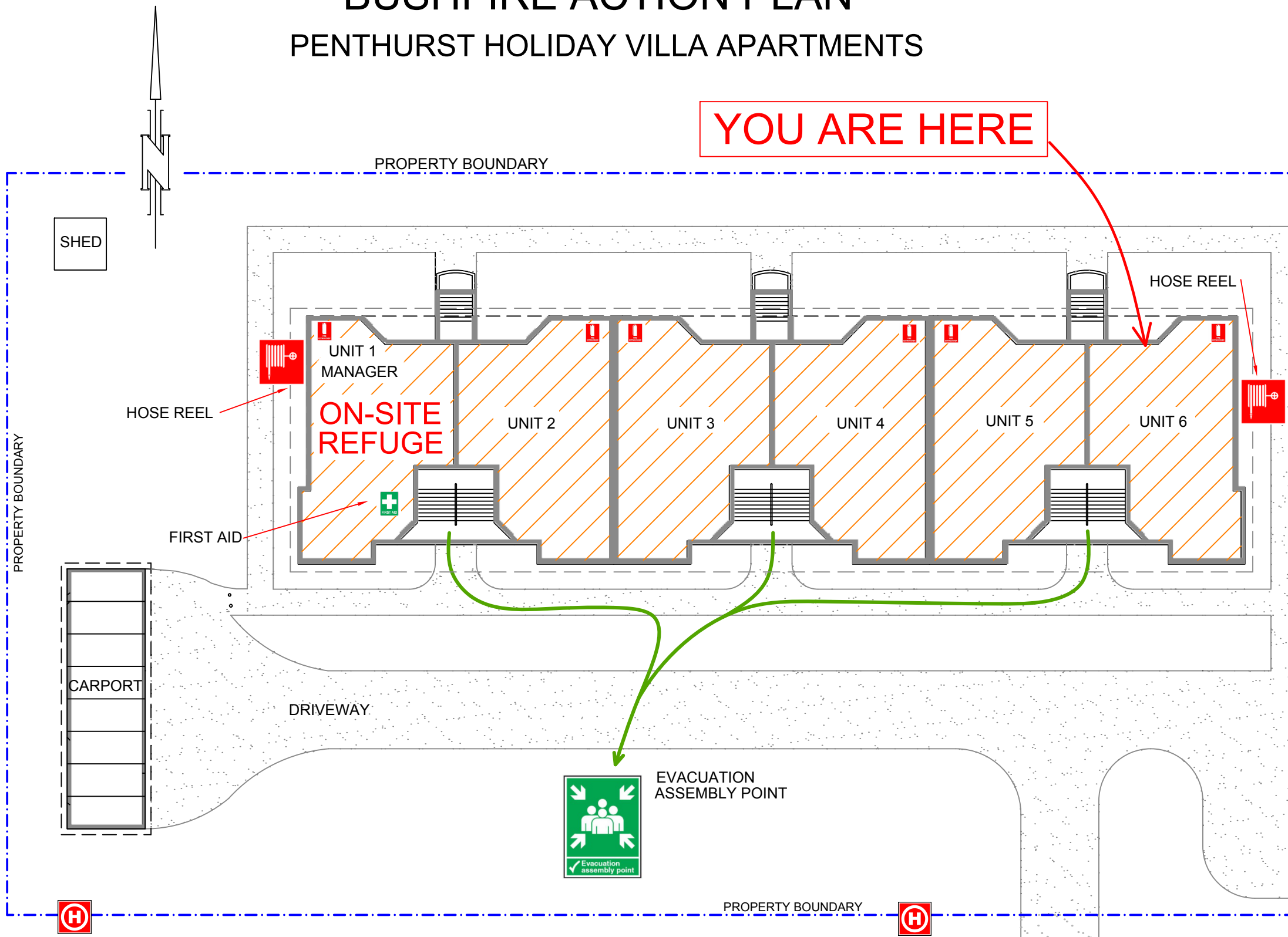
#### PRIMARY ACTION

MOVE TO EVACUATION ASSEMBLY AREA AND EVACUATE TO WILLIAMSVALE PCYC LOCATED AT 12 NORTH RD WILLIAMSVALE

#### SECONDARY ACTION

RELOCATE TO ON-SITE REFUGE WITHIN UNIT 1

CHIEF FIRE WARDEN OR DELEGATE TO DIAL 000 AND ADVISE EMERGENCY SERVICES OF SITUATION



PENTHURST ROAD

PRIMARY OFF SITE REFUGE 2 KILOMETERS

BUSHFIRE ACTION PLAN  
PENTHURST HOLIDAY VILLA APARTMENTS  
1216 PENTHURST ROAD  
WILLIAMSVALE TASMANIA 7150  
PLAN REVISED AND CURRENT AS OF OCT 2016

SITE CONTACT 1  
JAMES BLANK  
CHIEF FIRE WARDEN  
SITE MANAGER  
PHONE 0400 000 00X

SITE CONTACT 2  
JANE BLANK  
DEPUTY CHIEF FIRE WARDEN  
ASSISTANT SITE MANAGER  
PHONE 0400 000 11X



EVACUATION  
ASSEMBLY  
POINT



FIRST AID  
KIT



FIRE HOSE REEL



HYDRANT



FIRE EXTINGUISHER

# BUSHFIRE ACTION PLAN

## NORTH EAST COMMUNITY NURSING HOME

EMERGENCY  
DIAL  
**000**

### IN CASE OF BUSHFIRE

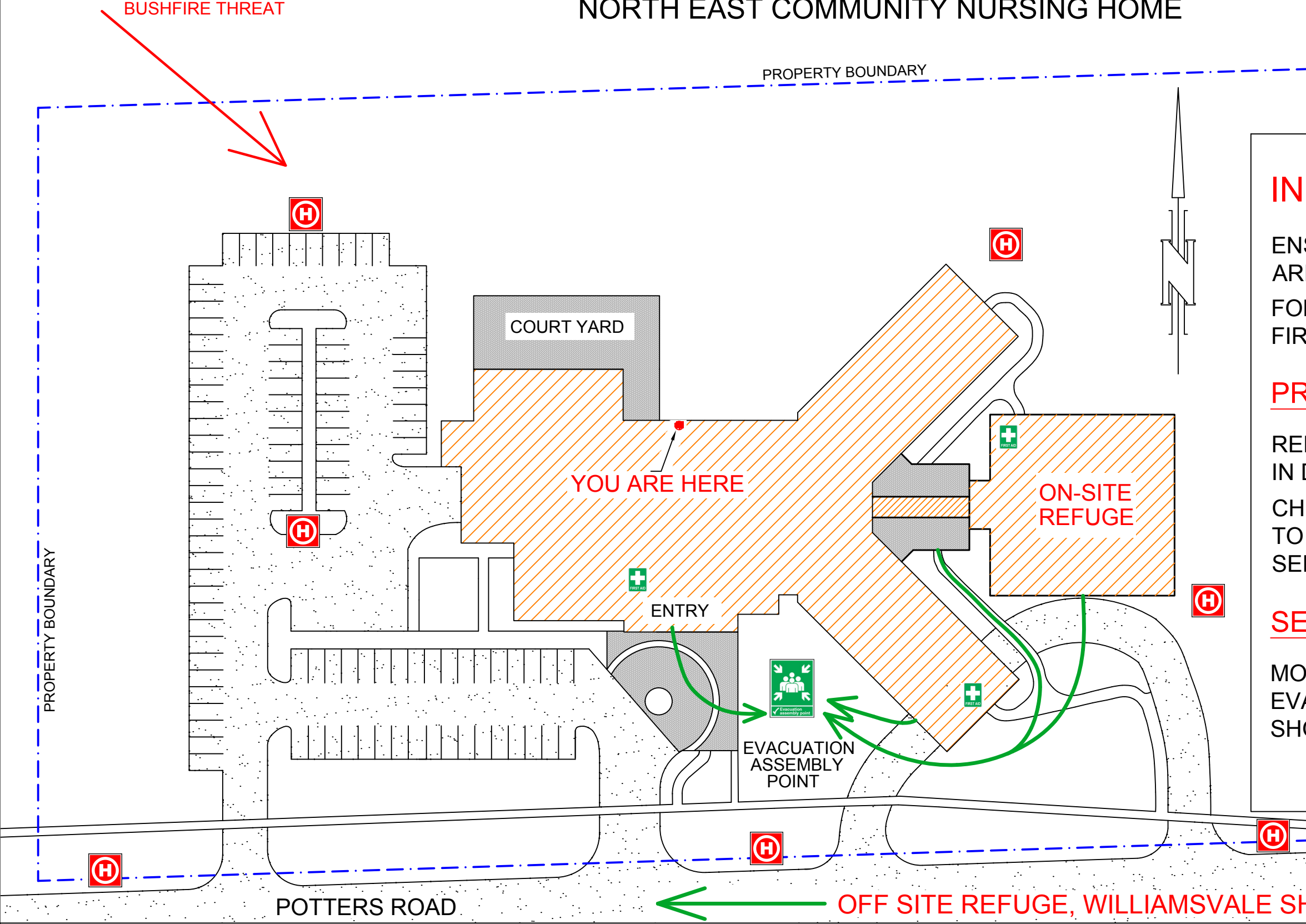
ENSURE ALL STAFF AND RESIDENTS  
ARE ACCOUNTED FOR  
FOLLOW INSTRUCTIONS FROM  
FIRE WARDENS

#### PRIMARY ACTION

RELOCATE TO ON-SITE REFUGE  
IN DELTA WING  
CHIEF FIRE WARDEN OR DELEGATE  
TO DIAL 000 AND ADVISE EMERGENCY  
SERVICES OF SITUATION

#### SECONDARY ACTION

MOVE TO ASSEMBLY AREA AND  
EVACUATE TO WILLIAMSVALE  
SHOWGROUND AT 16 POTTERS RD



BUSHFIRE ACTION PLAN  
NORTHEAST COMMUNITY NURSING HOME  
141 POTTERS ROAD  
WILLIAMSVALE TASMANIA 7150  
PLAN REVISED AND CURRENT AS OF OCT 2016

**SITE CONTACT 1**  
JAMES BLANK  
CHIEF FIRE WARDEN  
MANAGER  
PHONE 0400 000 00X

**SITE CONTACT 2**  
JANE BLANK  
DEPUTY CHIEF FIRE WARDEN  
BUSINESS MANAGER  
PHONE 0400 000 11X

**SITE CONTACT 3**  
AFTER HOURS SUPERVISOR  
FIRE WARDEN  
PHONE 0400 000 22X



EVACUATION  
ASSEMBLY  
POINT



FIRE  
HYDRANT



FIRST AID  
KIT

**EMERGENCY  
DIAL  
000**

## IN CASE OF BUSHFIRE

ENSURE ALL PERSONS ARE ACCOUNTED FOR

ATTEMPT TO MAKE CONTACT WITH CHIEF  
OR DEPUTY FIRE WARDENS

CONTACT TASMANIA FIRE SERVICE FOR  
SITUATION UPDATE ON 1800 000 699

### PRIMARY ACTION

ASSEMBLE AT ASSEMBLY AREA AND  
EVACUATE TO GLASSY BAY COMMUNITY  
CENTRE AT 123 JOHN ST, GLASSY BAY

### SECONDARY ACTION

RELOCATE TO BEACH REFUGE  
CLOSE ALL DOORS AND WINDOWS AND  
DIAL 000 - ADVISE OF SITUATION

ON-SITE REFUGE  
BEACH  
50 METRES

# BUSHFIRE ACTION PLAN

CARPORT

DRIVEWAY

YOU  
ARE  
HERE



GLASSY BAY  
COMMUNITY  
CENTRE  
3.5 KM

10,000 LITRE  
FIRE FIGHTING  
WATER SUPPLY



**BUSHFIRE ACTION PLAN**  
SHEARWATER COTTAGE  
871 OAK TREE ROAD  
GLASSY BAY TASMANIA 7150

PLAN REVISED AND CURRENT AS OF OCT 2016

**SITE CONTACT 1**  
JAMES BLANK  
CHIEF FIRE WARDEN  
CO-OWNER  
PHONE 0400 000 00X

**SITE CONTACT 2**  
JANE BLANK  
DEPUTY CHIEF FIRE WARDEN  
CO-OWNER  
PHONE 0400 000 11X



**EVACUATION  
ASSEMBLY  
POINT**



**FIRST AID  
KIT**



# BUSHFIRE ACTION PLAN



EMERGENCY  
DIAL  
**000**

## IN CASE OF BUSHFIRE

ENSURE ALL PERSONS ARE ACCOUNTED FOR  
ATTEMPT TO MAKE CONTACT WITH CHIEF  
OR DEPUTY FIRE WARDENS  
CONTACT TASMANIA FIRE SERVICE FOR  
SITUATION UPDATE ON 1800 000 699

### PRIMARY ACTION

ASSEMBLE AT ASSEMBLY AREA AND  
EVACUATE TO COMMUNITY  
CENTRE AT 123 JOHN ST, DOVER

### SECONDARY ACTION

ASSEMBLE IN ON-SITE REFUGE  
CLOSE ALL DOORS AND WINDOWS AND  
DIAL 000 - ADVISE OF SITUATION

OFF-SITE REFUGE 3.5 KILOMETERS  
DOVER COMMUNITY CENTRE  
123 JOHN ST, DOVER

BUSHFIRE ACTION PLAN  
SUNNY VALE CARAVAN PARK  
123 FOXTAIL ROAD  
DOVER TASMANIA 7150  
PLAN REVISED AND CURRENT AS OF JUNE 2016

SITE CONTACT 1  
JAMES BLANK  
CHIEF FIRE WARDEN  
SITE MANAGER  
PHONE 0400 000 00X

SITE CONTACT 2  
JANE BLANK  
DEPUTY CHIEF FIRE WARDEN  
ASSISTANT SITE MANAGER  
PHONE 0400 000 11X



EVACUATION  
ASSEMBLY  
POINT



FIRE HOSE REEL



FIRST AID  
KIT



HYDRANT

# BUSHFIRE ACTION PLAN

OFF-SITE REFUGE 1.5 KILOMETERS  
OAK TREE SPORTS CENTRE  
123 JOHN ST, OAK TREE, TAS

EMERGENCY  
DIAL  
**000**

## IN CASE OF BUSHFIRE

ENSURE ALL PERSONS ARE ACCOUNTED FOR

ATTEMPT TO MAKE CONTACT WITH CHIEF  
OR DEPUTY FIRE WARDENS

CONTACT TASMANIA FIRE SERVICE FOR  
SITUATION UPDATE ON 1800 000 699

### PRIMARY ACTION

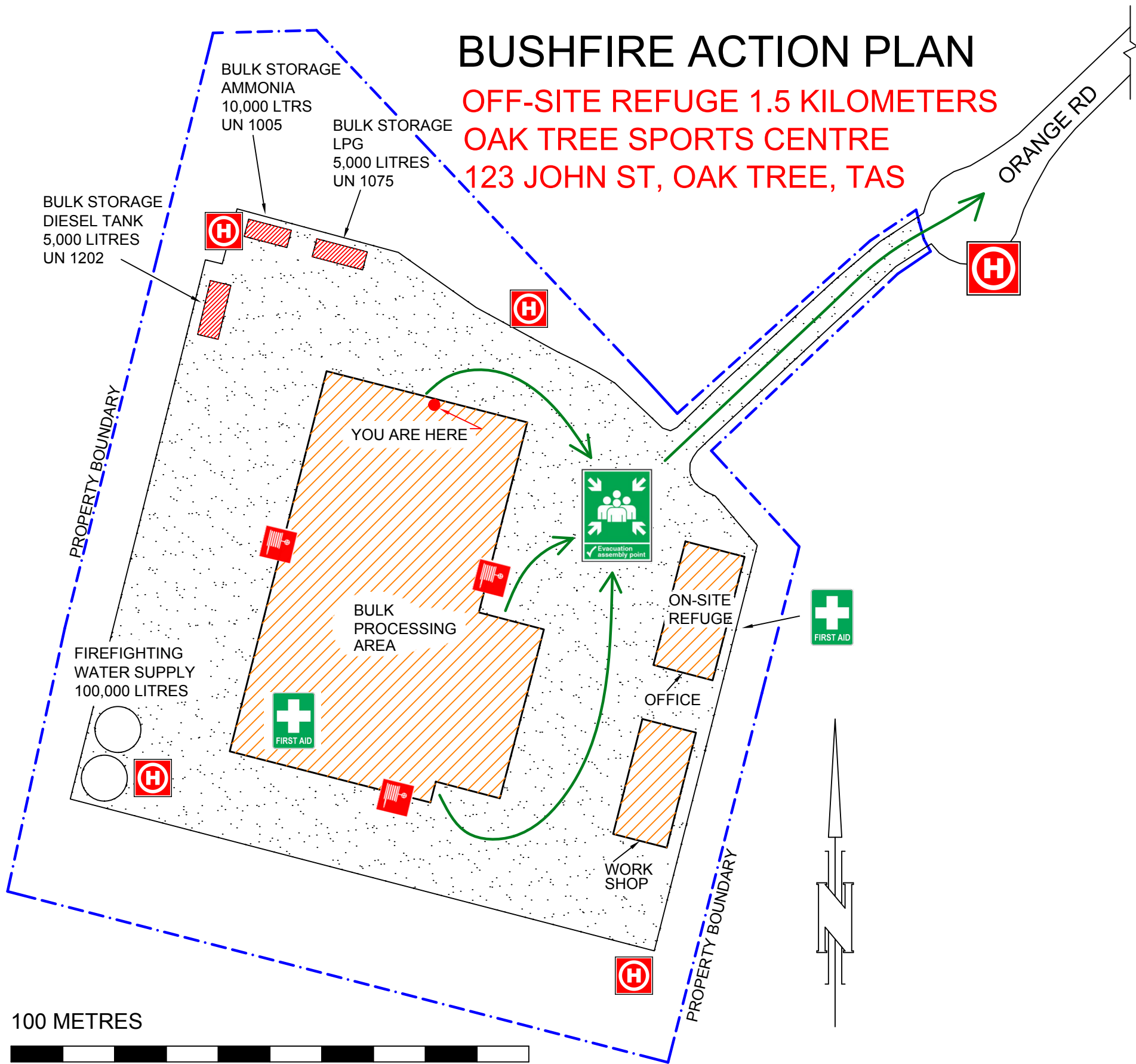
ASSEMBLE AT ASSEMBLY AREA AND  
EVACUATE TO COMMUNITY  
CENTRE AT 123 JOHN ST, OAK TREE, TAS

### SECONDARY ACTION

ASSEMBLE IN ON-SITE REFUGE

CLOSE ALL DOORS AND WINDOWS AND  
ISOLATE AIRCONDITIONING PLANT

DIAL 000 - ADVISE OF SITUATION



BUSHFIRE ACTION PLAN  
AJAX BULK PROCESSING  
123 ORANGE ROAD  
OAK TREE TASMANIA 7150

PLAN REVISED AND CURRENT AS OF OCTOBER 2016

SITE CONTACT 1  
JANE BLANK  
CHIEF FIRE WARDEN  
SITE MANAGER  
PHONE 0400 000 00X

SITE CONTACT 2  
JAMES BLANK  
DEPUTY CHIEF FIRE WARDEN  
ASSISTANT SITE MANAGER  
PHONE 0400 000 11X

SITE CONTACT 3  
JOHN BROWN  
CHEMICAL ENGINEER  
OPERATIONS MANAGER  
PHONE 0400 000 22X



EVACUATION  
ASSEMBLY  
POINT



FIRST AID  
KIT



FIRE HOSE REEL



HYDRANT



**[fire.tas.gov.au](http://fire.tas.gov.au)**

**Bushfire Planning & Policy** GPO Box 1526 Hobart Tasmania 7001  
Phone (03) 6230 8600 | Fax (03) 6231 6647 | [planning@fire.tas.gov.au](mailto:planning@fire.tas.gov.au)